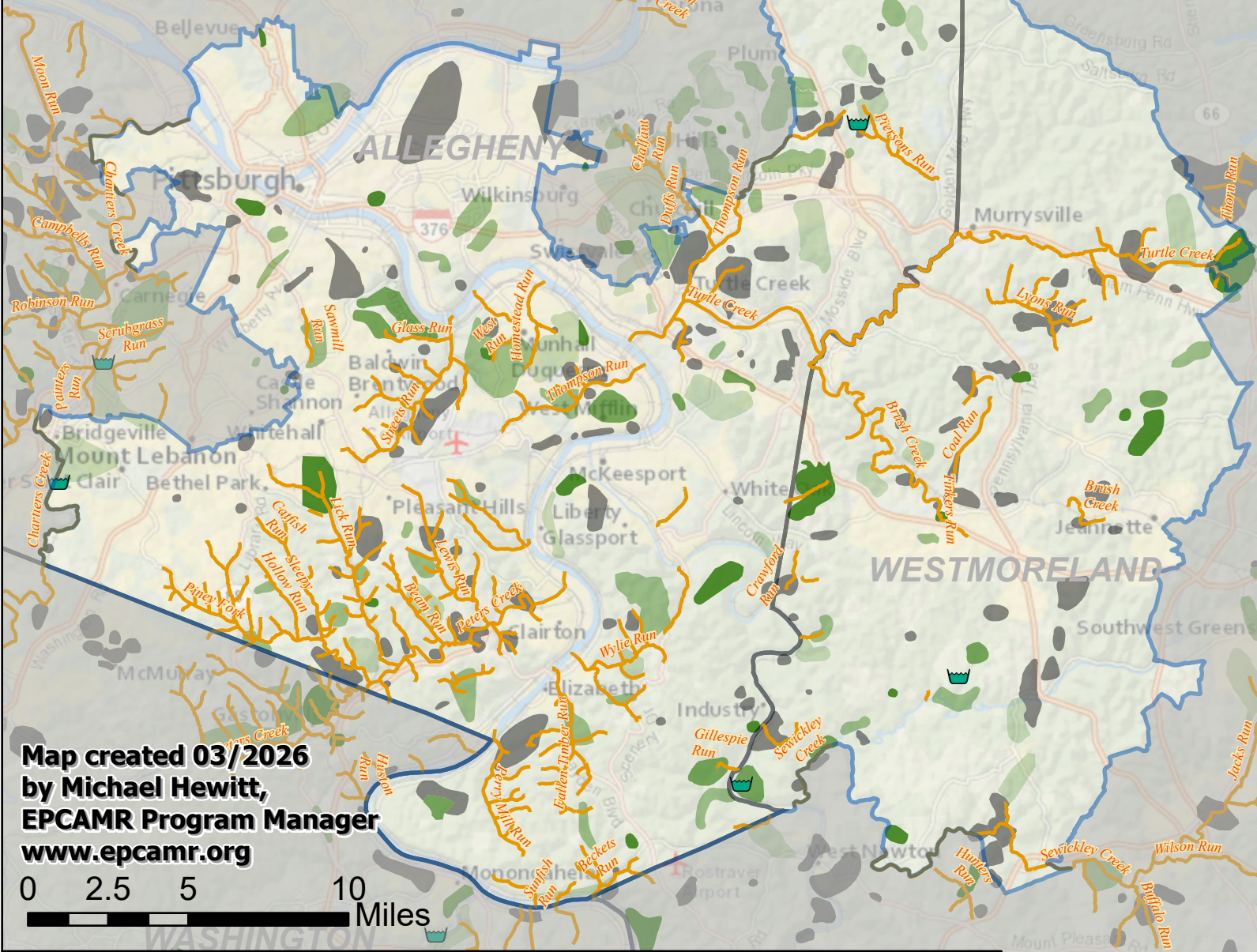
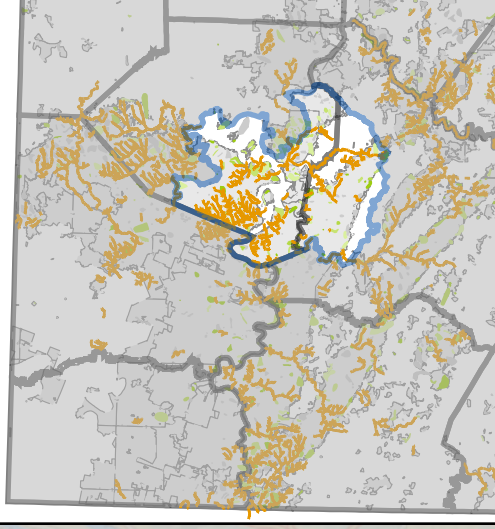


ABANDONED MINE ISSUES IN PA CONGRESSIONAL DISTRICT 12



Map created 03/2026
by Michael Hewitt,
EPCAMR Program Manager
www.epcamr.org

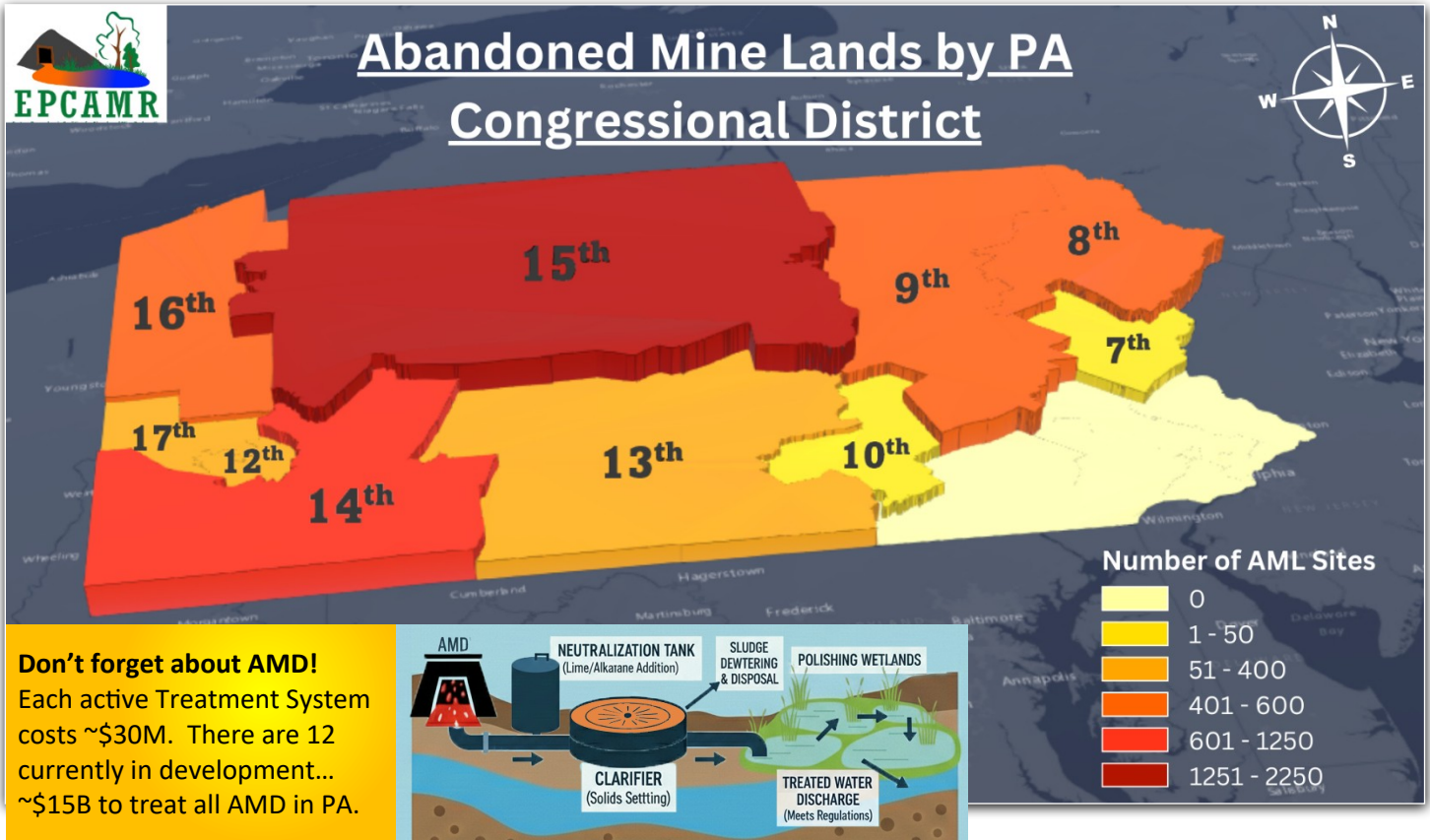
<p>Legislative District</p> <ul style="list-style-type: none"> 12 Outside District 	<p>AMD Treatment Type</p> <ul style="list-style-type: none"> Active Treatment System (1) Passive Treatment System (7) 	<p>AML Sites (DEP AMLIS)</p> <ul style="list-style-type: none"> Unreclaimed 1 to 25% Reclaimed 26 to 50% Reclaimed 51 to 75% Reclaimed 76 to 100% Reclaimed 	<ul style="list-style-type: none"> AMD Impacted Streams
---	--	--	--



District 12 Inventory '26	AML Sites	Features	% AML Features	Acres*
Unreclaimed	221	648	75.3%	3,222
Reclaimed	16	212	24.7%	1,552
Active	2			
Total	239	860		4,774

Individual features include site conditions like open mine shafts, waste coal piles, strip mine pits, subsidence prone areas, contaminated mine water discharges, and etc. Sites were abandoned prior to the passage of the Surface Mining Control and Reclamation act of 1977. Active status refers to re-mining of the site.

AMD Impaired Streams ‡ 247 miles

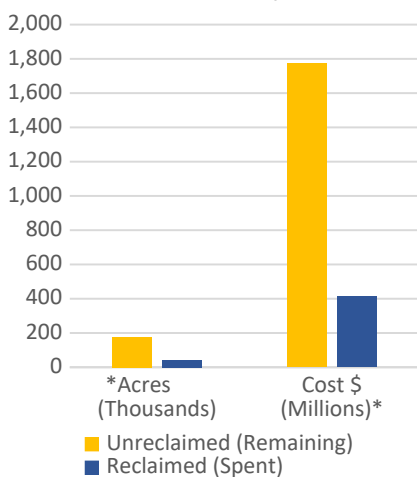


Don't forget about AMD!
Each active Treatment System costs ~\$30M. There are 12 currently in development... ~\$15B to treat all AMD in PA.

More than 2 dozen coal states & tribes need continued support & increases of federal funds:

1. AML Trust Fund – Fee per ton of coal (reduced again). Coal sells at \$40-200/ton.
 - Only 22.4¢ surface, 9.6¢ underground, & 8¢ lignite, a 0.6%, 0.2%, & 0.2% fee...
2. AMLER – \$130M/yr for cleanup & economic revitalization in hardest hit states.
3. IJA – Provides ~\$11 Billion to address safety hazards & AMD in all coal states.

AML Acres & Cleanup Cost @ \$10K/acre



Statewide PA Inventory '26	AML Sites	Features	% of AML Features	Acres*
Unreclaimed	5,320	27,859	79.3%	177,205
Reclaimed	253	7,286	20.7%	41,119
Active	19			
Total	5,592	35,145		218,324

AMD Impaired Streams ‡ 5,663 miles

Delisted Streams '24-'26 17 miles

*These are conservative acreage estimates: AML Feature Polygon GIS layer was projected from GCS North American 1983 to USA Contiguous Albers Equal Area Conic to preserve area and does not include a count of AML Feature Points. Source: 01/2026 AMLIS Inventory by PA DEP Bureau of Abandoned Mine Reclamation (BAMR) updated quarterly.

‡ AMD stream miles. Source: 2026 Pennsylvania Integrated Water Quality Report: Clean Water Act Section 303(d) List and 305(b) Report created by PA DEP Water Quality Division (WQD) biannually.